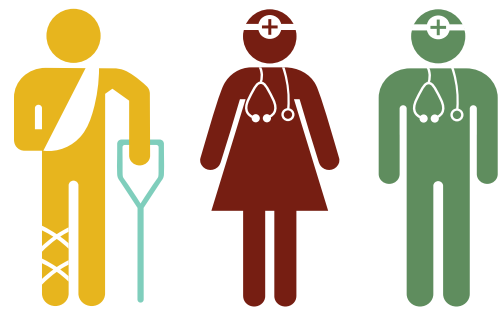


HEALTH IN + WAYNE COUNTY



76.8 years
Life Expectancy in
Wayne County



1 to 51
Clinician to Patient Ratio
(Primary Care)



of Wayne County
adults report no
leisure physical
activity

27%

34%

of Wayne
County adults
are obese

49%

of Wayne County
residents have
access to locations
for physical activity

17%

Percent Uninsured in
Wayne County

21%

of Wayne
County adults
smoke

**WAYne
FORWARD**

OPPORTUNITY FOR ALL



OPPORTUNITY FOR ALL

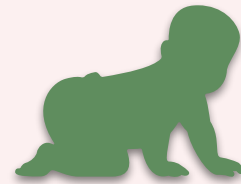
Wayne County ranks **61st** amongst North Carolina counties for **life expectancy**



Medicare reimbursements per enrollee in Wayne County was

\$9,047 in 2014

12,708 people in Wayne County are **uninsured.**



Clinician to Patient Ratios

PRIMARY CARE 1 to 51

DENTISTS 1 to 48

MENTAL HEALTH 1 to 169

SPECIALIST 1 to 91



Congestive heart failure,

Acute Myocardial Infarction and **Pneumonia**

are most prevalent amongst hospitalizations in Wayne County



OPPORTUNITY FOR ALL

Diabetes Care

BLACK ENROLLEES - 670

NON-BLACK ENROLLEES - 1,258

In 2014, the Medicare enrollees in Wayne County, NC between the ages of 65 and 75 had **1,287** eye exams, **1,711** hemoglobin tests, and **1,516** lipid tests as part of their **diabetes care**.

Preventative Women's Health Services

Female Medicare enrollees between the ages of 67 and 69 that have been classified with the racial labels, either Black or non-Black.

BLACK WOMEN - 308

NON-BLACK WOMEN - 723

In 2014, out of the **1,031** women in Wayne County, NC between the ages of 67 and 69 enrolled in Medicare, **664** had mammograms.

Wayne County Health Behaviors

Food environment index - 6.1

Index of factors that contribute to a healthy food environment, 0 (worst) to 10 (best).

Teen births in Wayne County - 48 per 1000

Number of births per 1,000 female population ages 15-19

